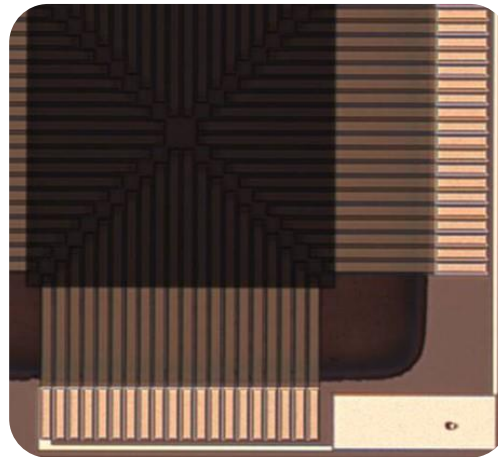
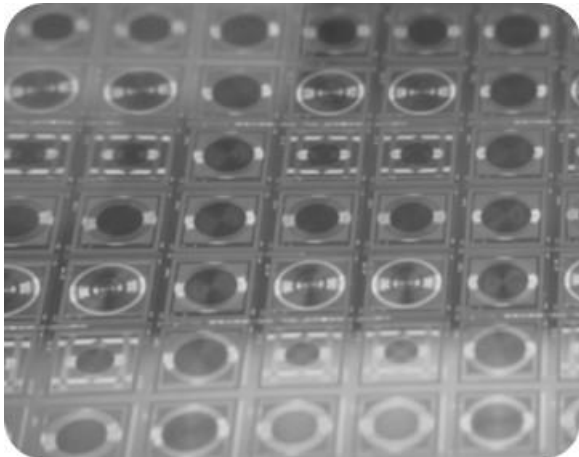
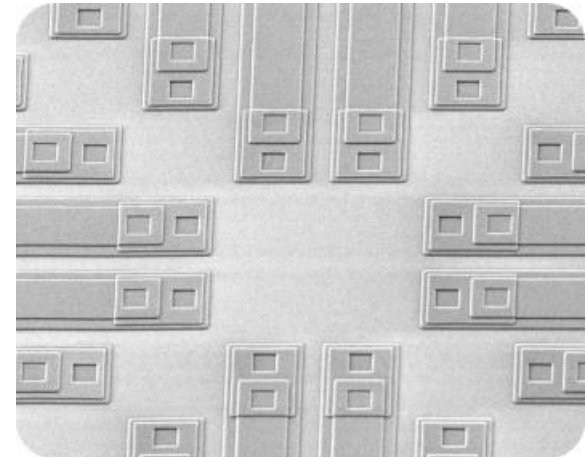


Process Platform: Thermopile

- Cumulative Shipments: Over 14,000 wafers
- 1P2M and 2P2M with backside release
- Large suspended diaphragm, over 1.0 mm²
- Better efficiency with an additional black absorber layer

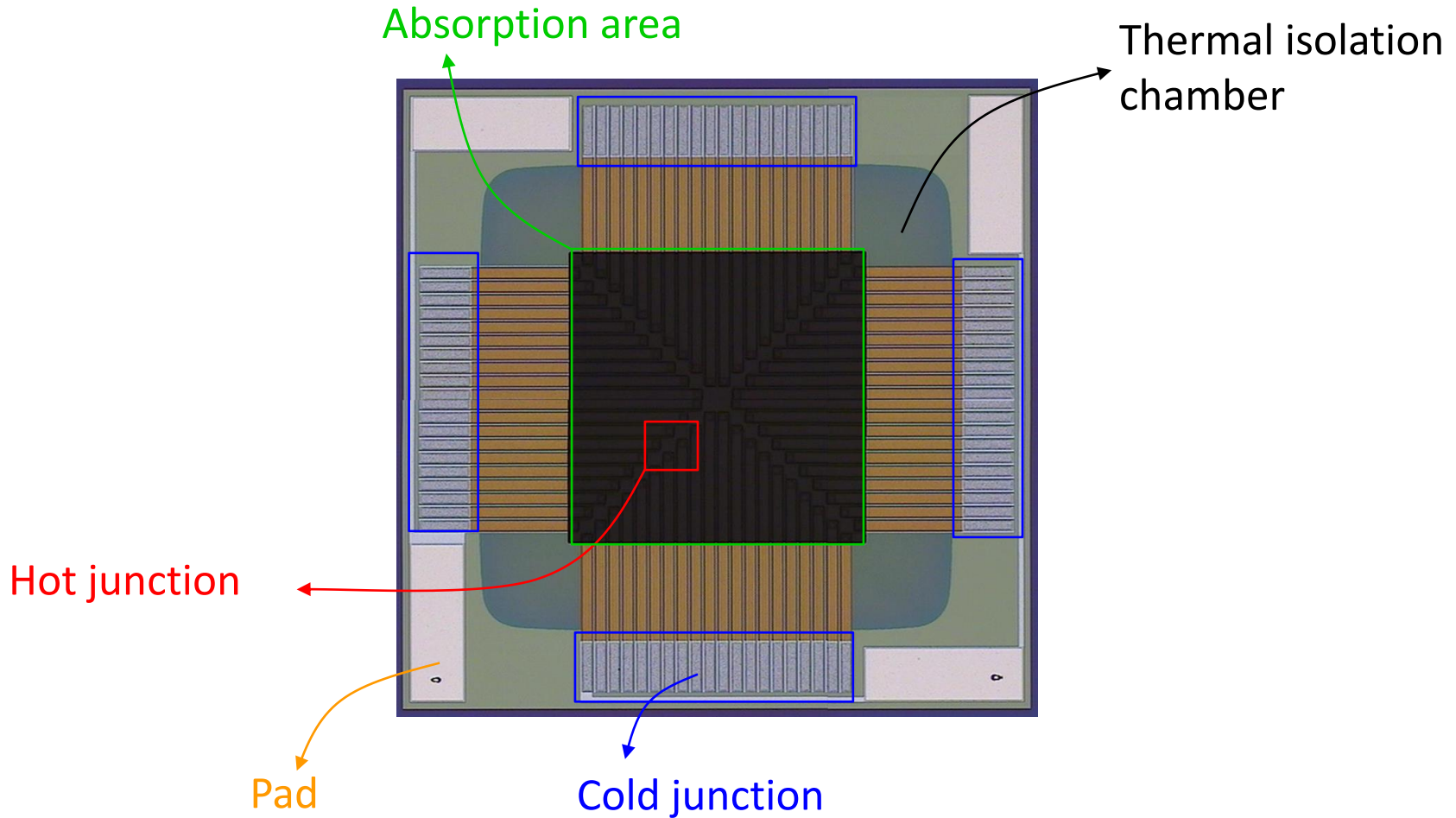


Poly-Si / metal

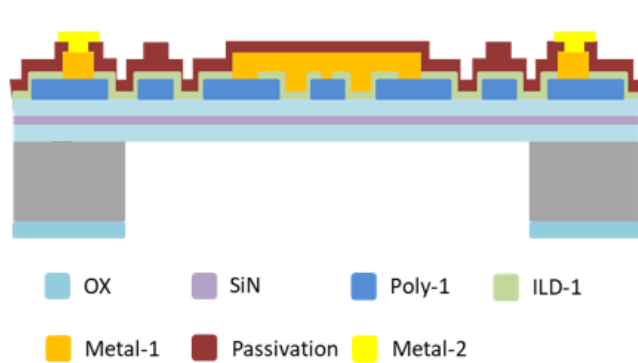


P-Poly-Si / N-Poly-Si stack

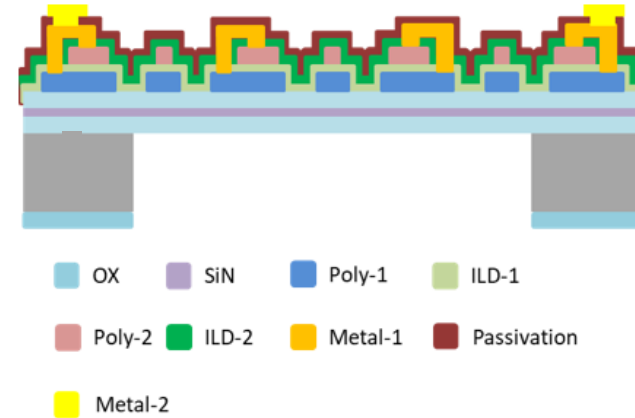
Process Platform: Thermopile



Process Platform: Thermopile



Cross-section of one-poly two-metal (1P2M) Thermopile



Cross-section of two-poly two-metal (2P2M) Thermopile

- Layout design comes from customer.
- Fixed process (film stacking and thickness) but adjustable poly sheet resistance.